

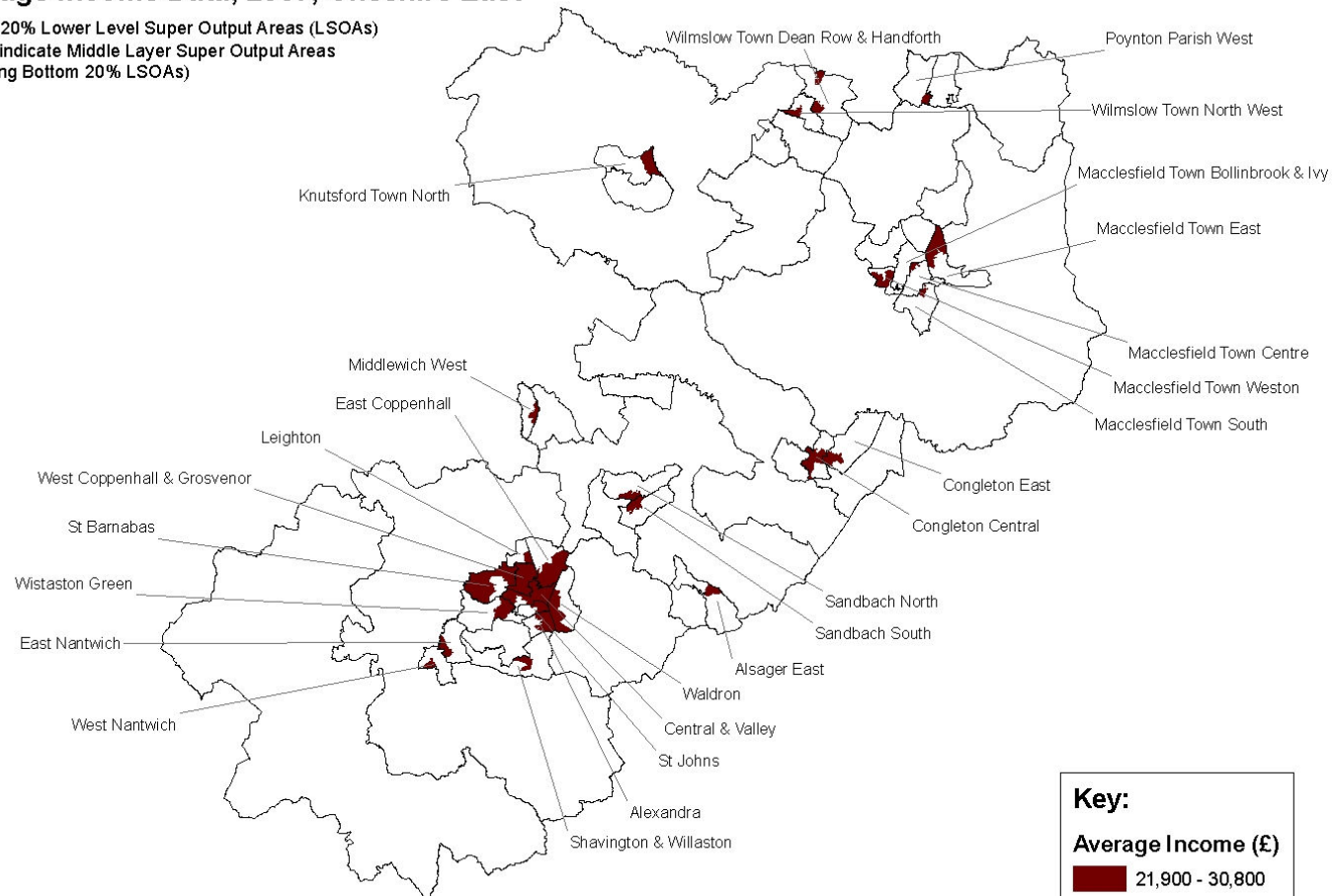
Appendix

Appendix.....	1
Map A1: Average income Data.....	2
Map A2: Total Recorded Crimes	3
Map A3: Model-based data on Binge Drinking	4
Map A4: All Emergency Admissions to Hospitals	5
Map A5: Lone Parents claiming Income Support	6
Map A6: Mental Health conditions	7
Map A7: Overall IMD	8
Map A8: Population aged 75+	9
Map A9: Model-based Data on Smoking	10
Map A10: Standardised Mortality Ratios	11
Map A11: Unemployment Rate	12
Map A12: Small Deliberate Fires	13
Figure A1: Forecast Population of 75+ and 85+ Age Groups	14
Figure A2 Importance for Providing a Good Quality of Life	15
Figure A3 Issues to Improve Quality of Life.....	15
Figure A4 Quality of Life Issues – Importance and Priorities for Improving their Local Area East Cheshire.....	16
Figure A5: Overall Importance in making somewhere a good place to live (% in top 5 priorities.....	17
Figure A6: Overall Priorities for Improving Quality of Life (% in top 5 priorities)	18
Figure A7: Importance and Priorities for Improving their Local Area	19
Figure A8 Perceived Level of Anti-Social Behaviour by behaviour problems	20

Map A1: Average income Data

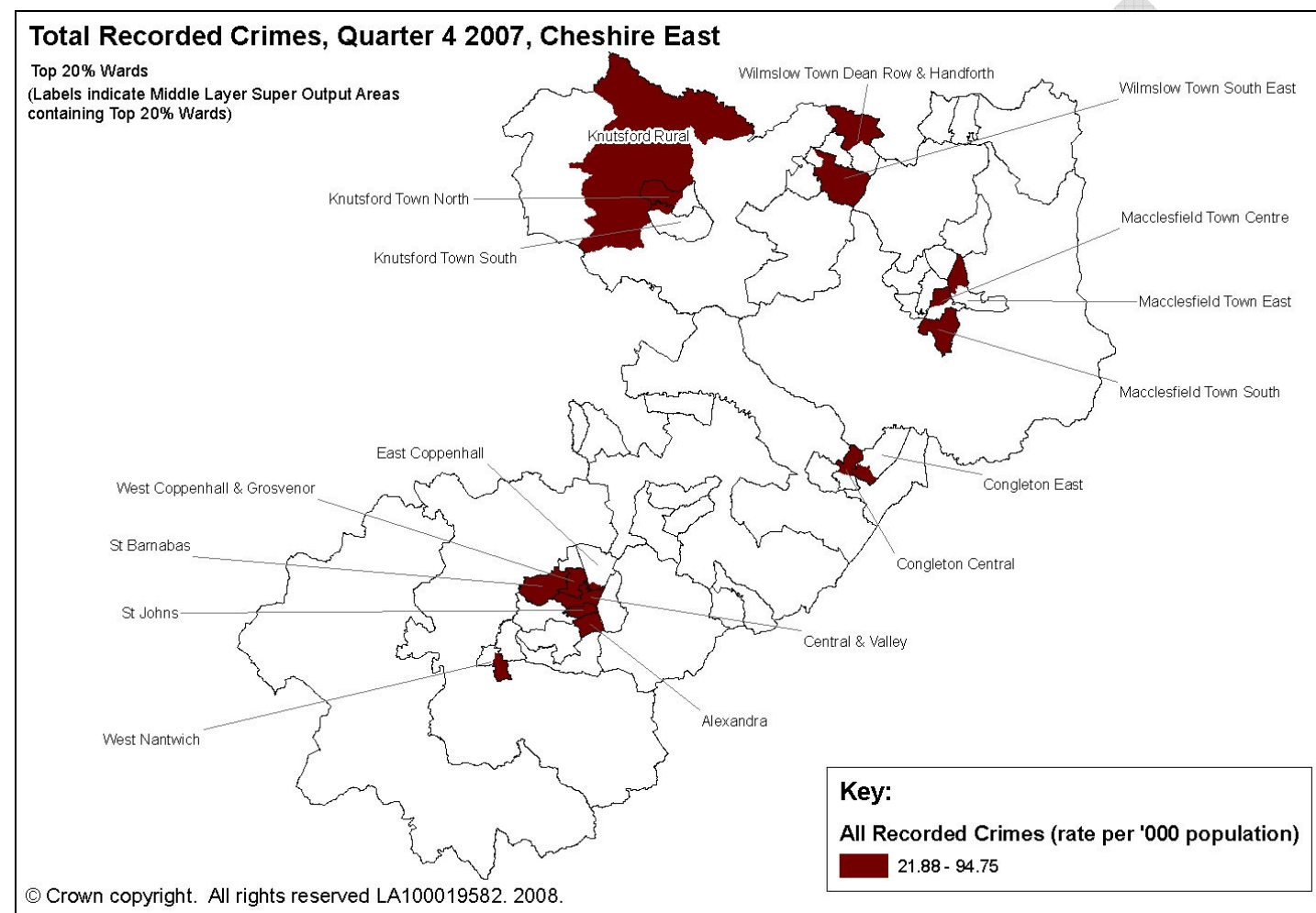
Average Income Data, 2007, Cheshire East

Bottom 20% Lower Level Super Output Areas (LSOAs)
(Labels indicate Middle Layer Super Output Areas
containing Bottom 20% LSOAs)



© Crown copyright. All rights reserved LA100019582. 2008.

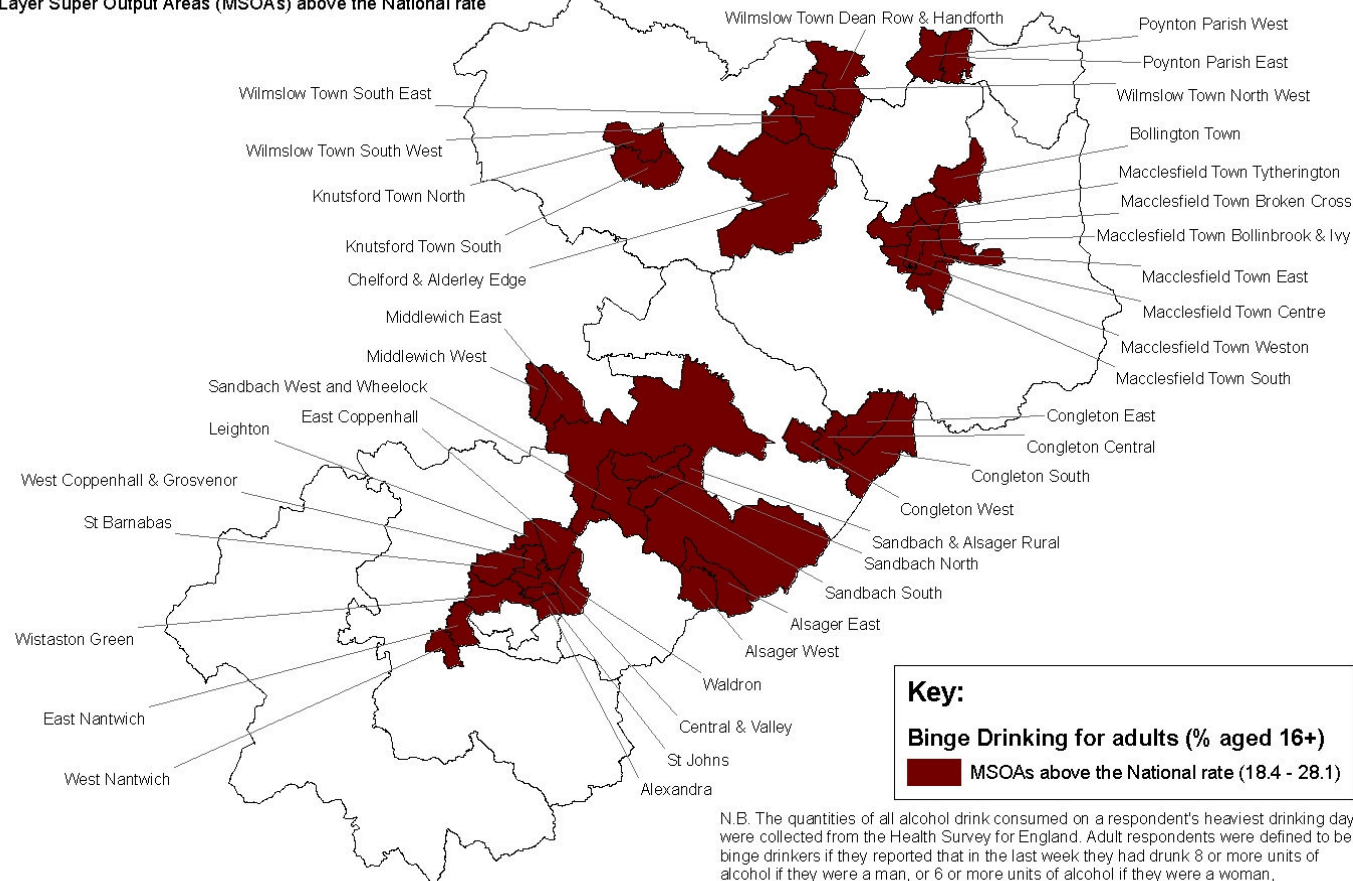
Map A2: Total Recorded Crimes



Map A3: Model-based data on Binge Drinking

Model-based data on Binge Drinking, 2003-2005 (3-year pooled data), Cheshire East

Middle Layer Super Output Areas (MSOAs) above the National rate



Key:

Binge Drinking for adults (% aged 16+)

MSOAs above the National rate (18.4 - 28.1)

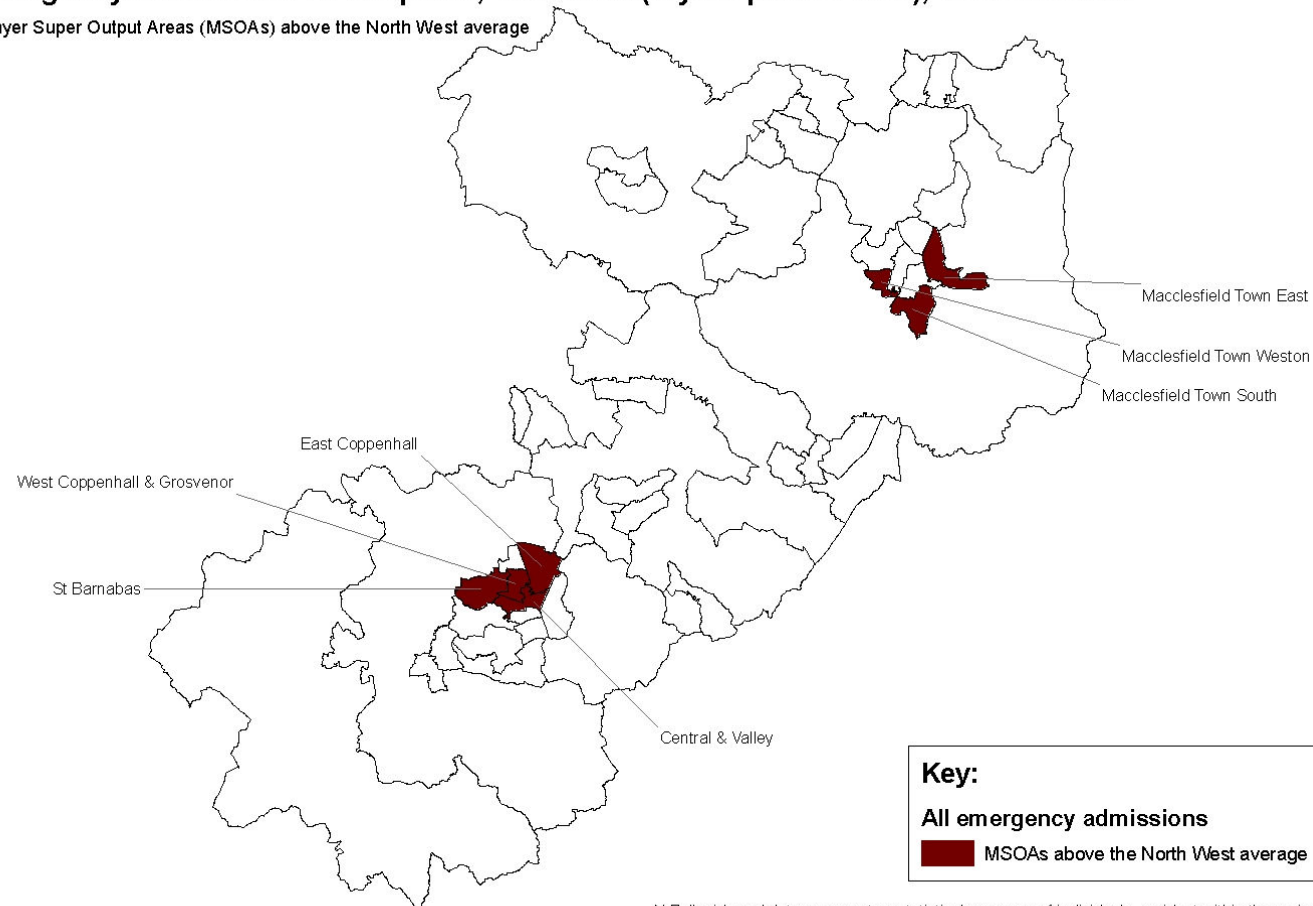
N.B. The quantities of all alcohol drink consumed on a respondent's heaviest drinking day were collected from the Health Survey for England. Adult respondents were defined to be binge drinkers if they reported that in the last week they had drunk 8 or more units of alcohol if they were a man, or 6 or more units of alcohol if they were a woman, on any one day or more. They were not considered a binge drinker if they had not drunk this amount of alcohol on any day in the past week.

© Crown copyright. All rights reserved LA100019582. 2008.

Map A4: All Emergency Admissions to Hospitals

All Emergency Admissions to Hospitals, 1999-2003 (5-year pooled data), Cheshire East

Middle Layer Super Output Areas (MSOAs) above the North West average



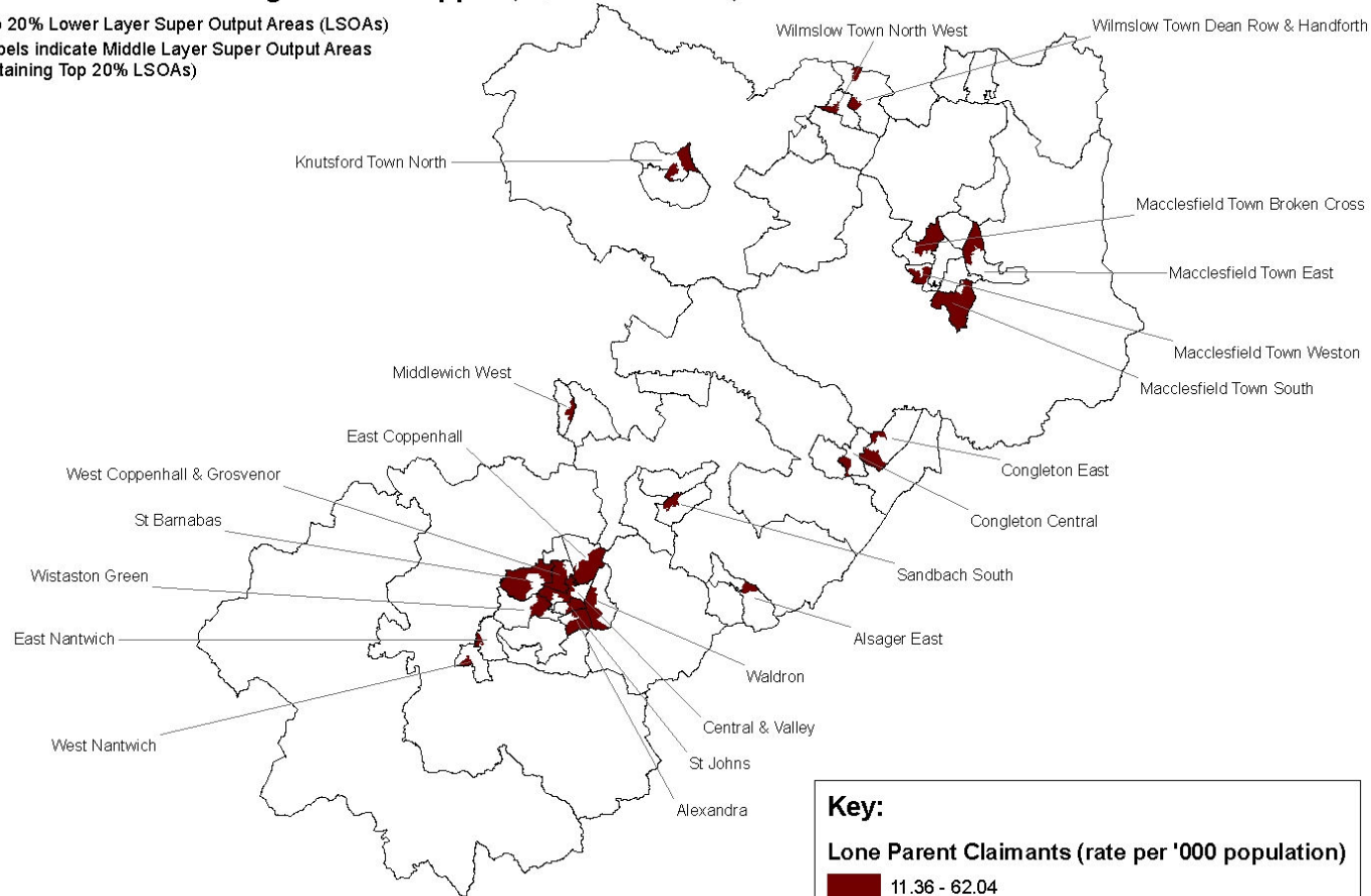
© Crown copyright. All rights reserved LA100019582. 2008.

N.B. 'Incidence' data represents a statistical summary of individuals, resident within the region, who have been admitted to hospital as emergency admission only.

Map A5: Lone Parents claiming Income Support

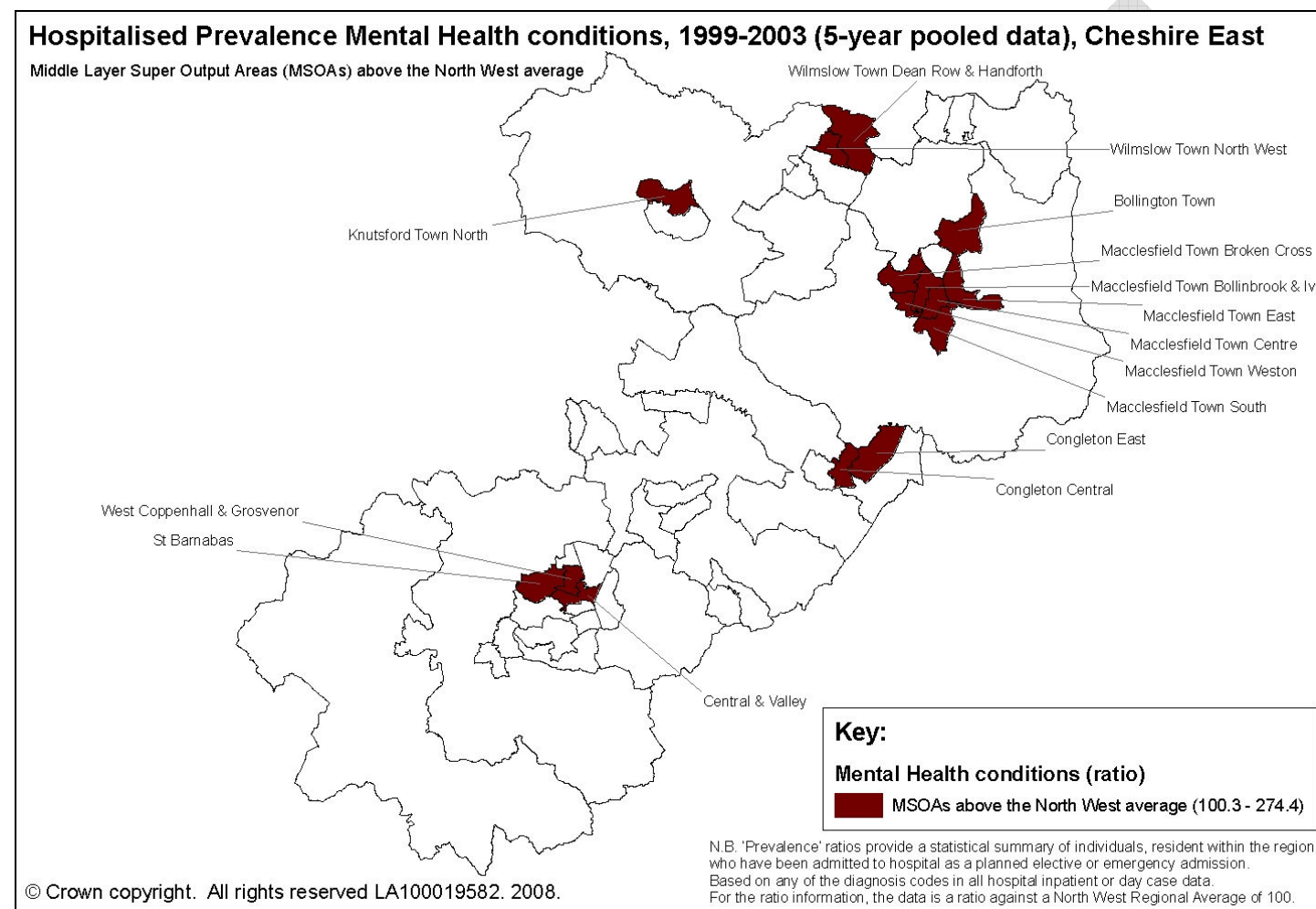
Lone Parents claiming Income Support, Quarter 3 2007, Cheshire East

Top 20% Lower Layer Super Output Areas (LSOAs)
(Labels indicate Middle Layer Super Output Areas
containing Top 20% LSOAs)



© Crown copyright. All rights reserved LA100019582. 2008.

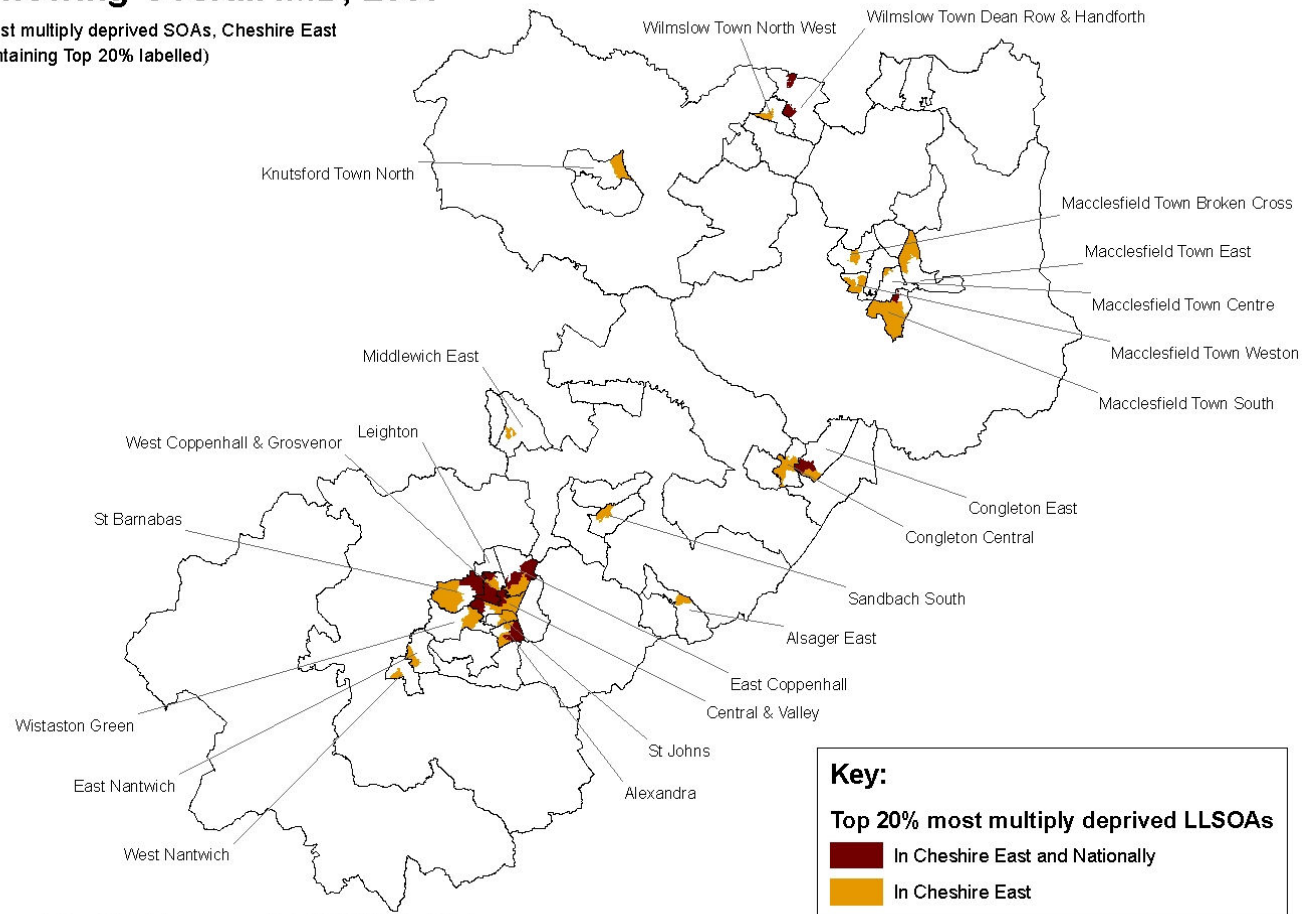
Map A6: Mental Health conditions



Map A7: Overall IMD

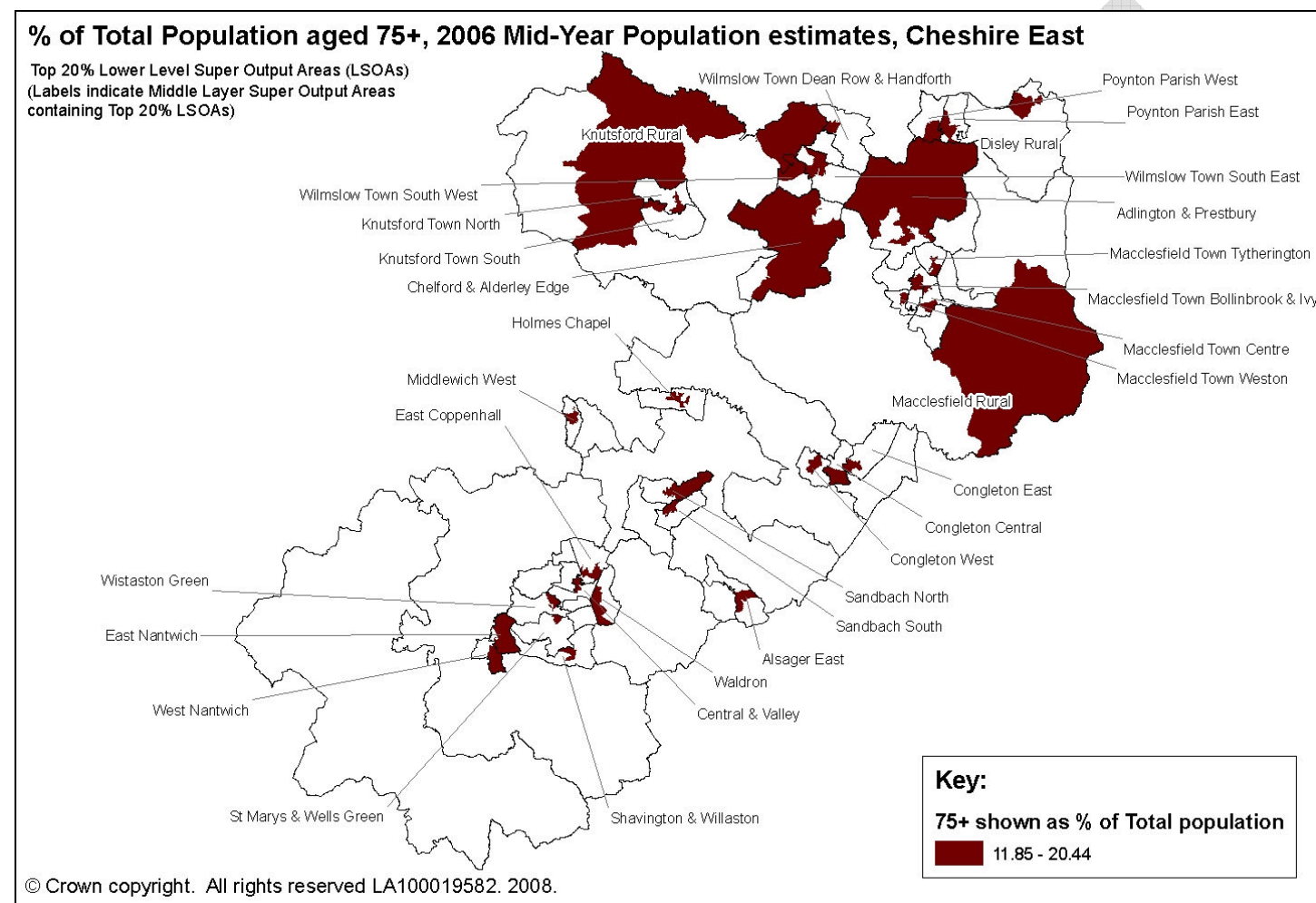
Map showing Overall IMD, 2007

Top 20% most multiply deprived SOAs, Cheshire East
(MSOAs containing Top 20% labelled)



© Crown copyright. All rights reserved LA100019582. 2008.

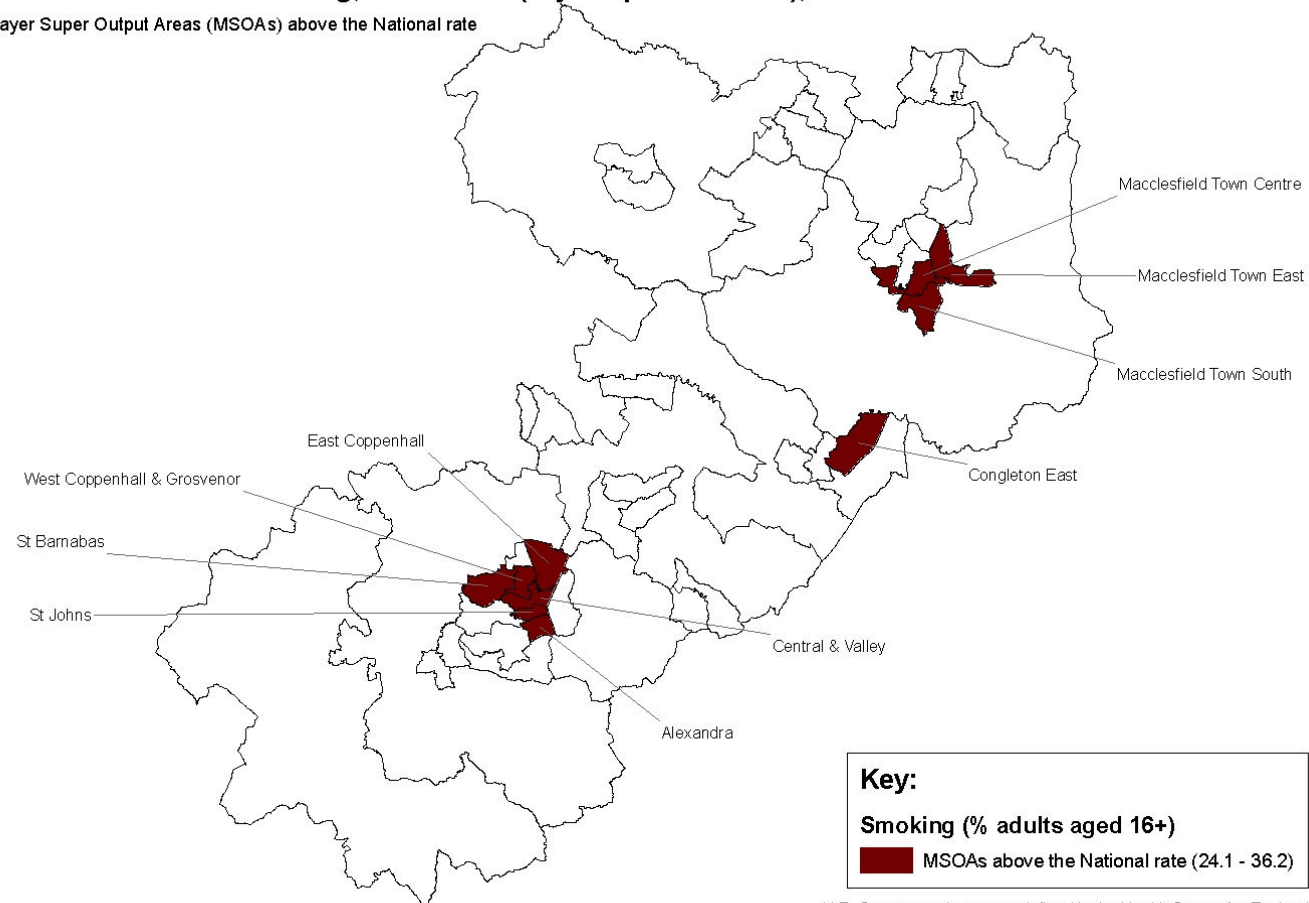
Map A8: Population aged 75+



Map A9: Model-based Data on Smoking

Model-based data on Smoking, 2003-2005 (3-year pooled data), Cheshire East

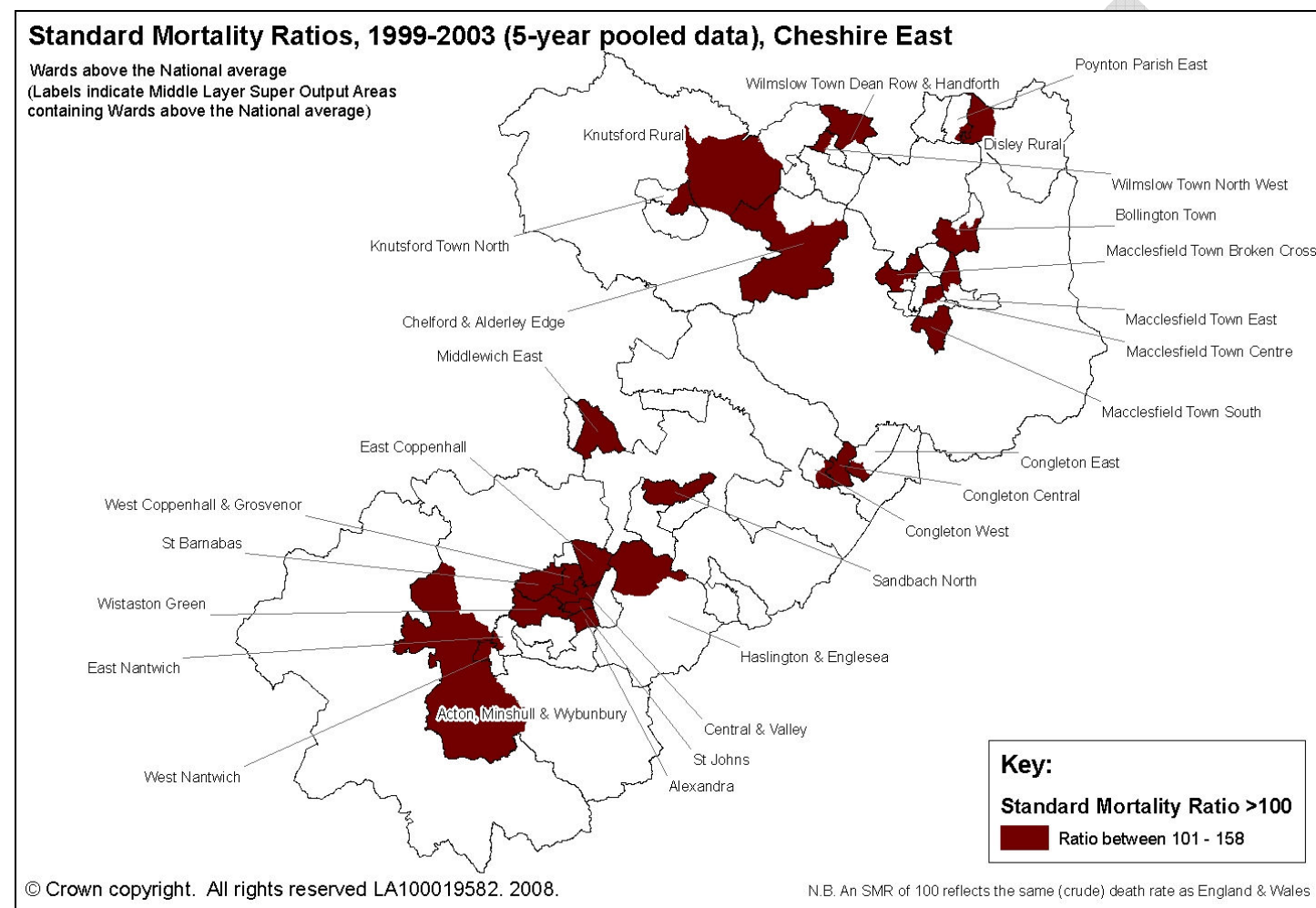
Middle Layer Super Output Areas (MSOAs) above the National rate



© Crown copyright. All rights reserved LA100019582. 2008.

N.B. Current smokers were defined in the Health Survey for England if the respondent reported that they were a "current cigarette smoker".

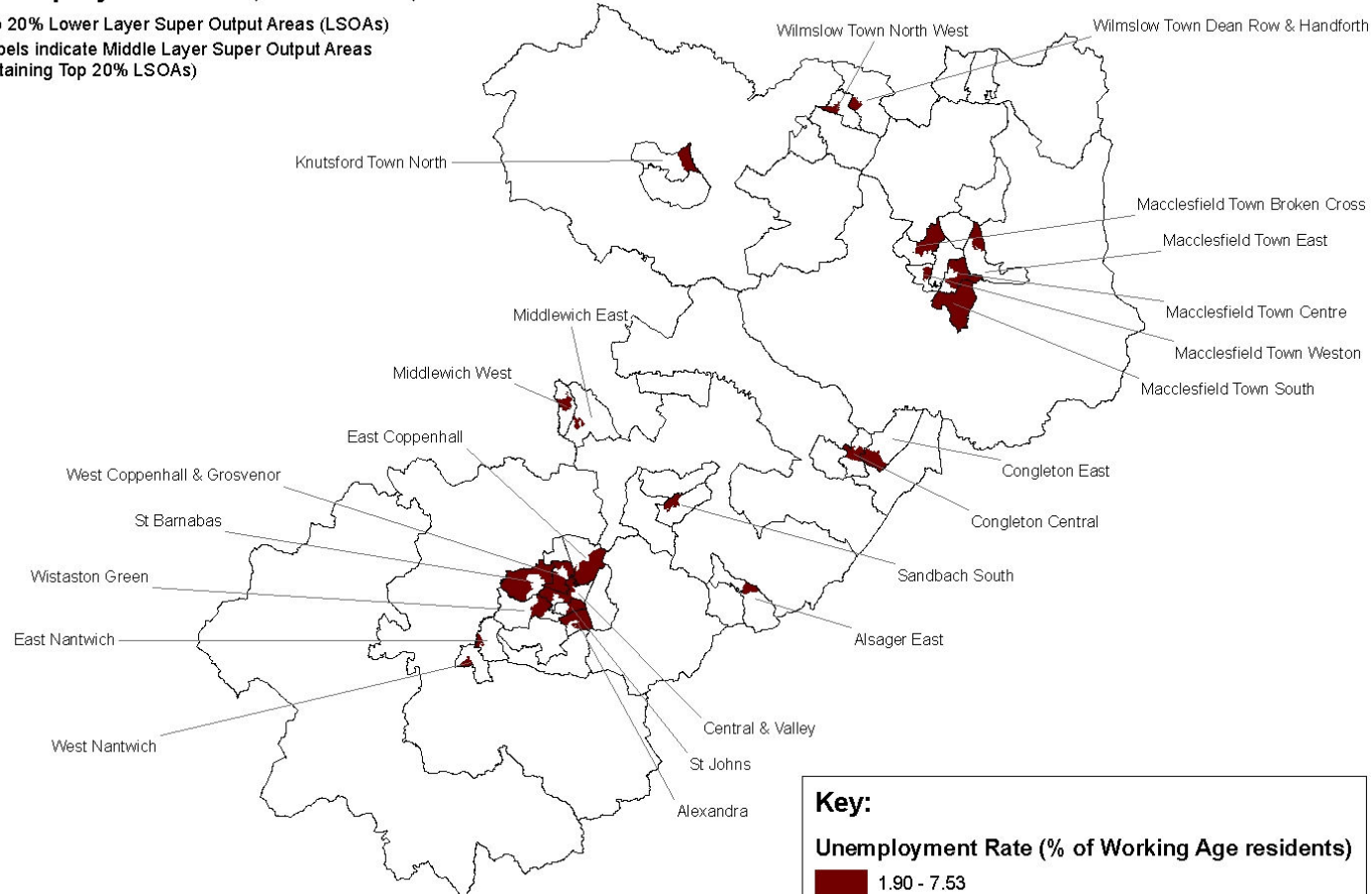
Map A10: Standardised Mortality Ratios



Map A11: Unemployment Rate

Unemployment Rate, June 2008, Cheshire East

Top 20% Lower Layer Super Output Areas (LSOAs)
(Labels indicate Middle Layer Super Output Areas
containing Top 20% LSOAs)



© Crown copyright. All rights reserved LA100019582. 2008.

Map A12: Small Deliberate Fires

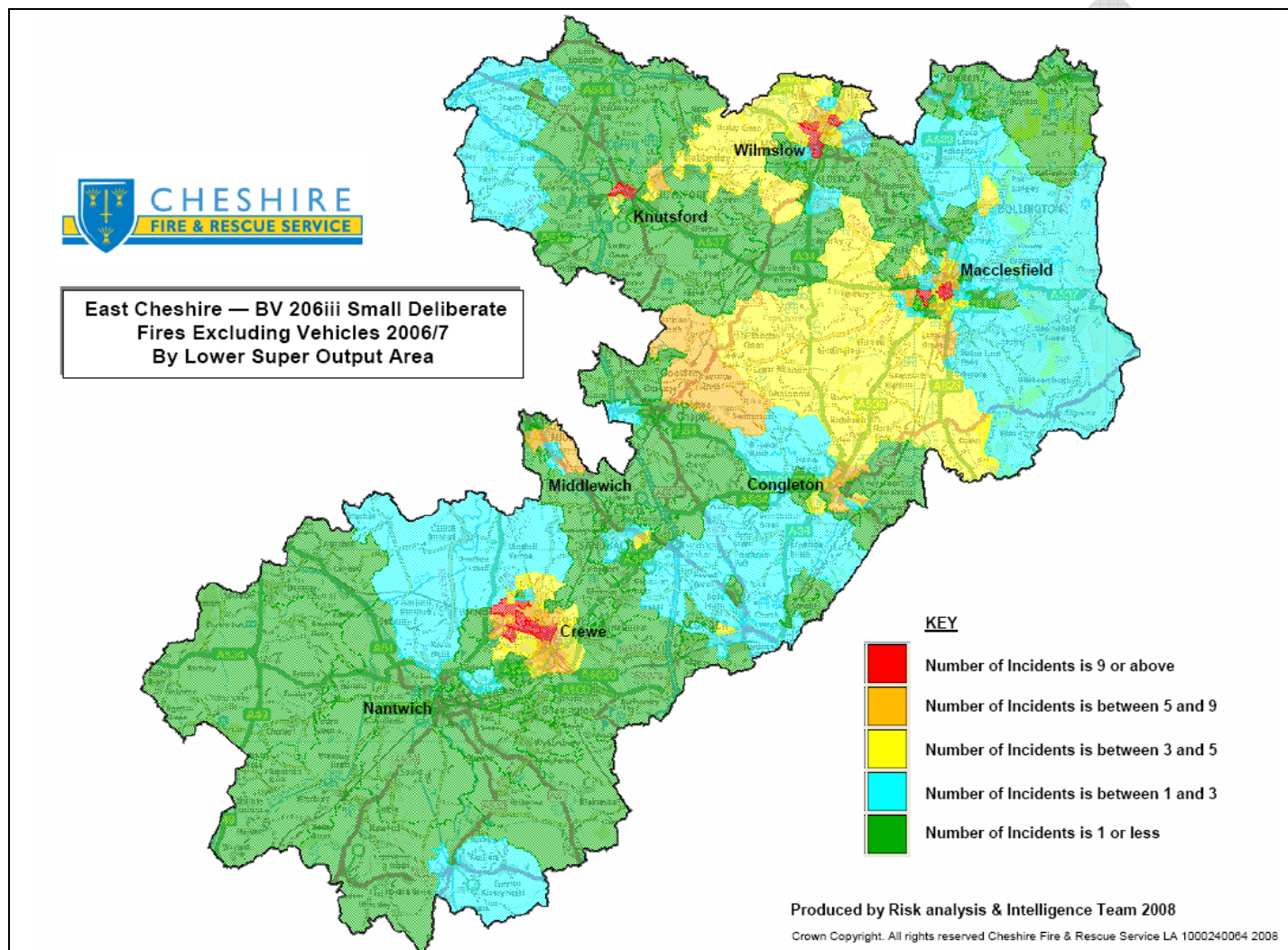


Figure A1: Forecast Population of 75+ and 85+ Age Groups

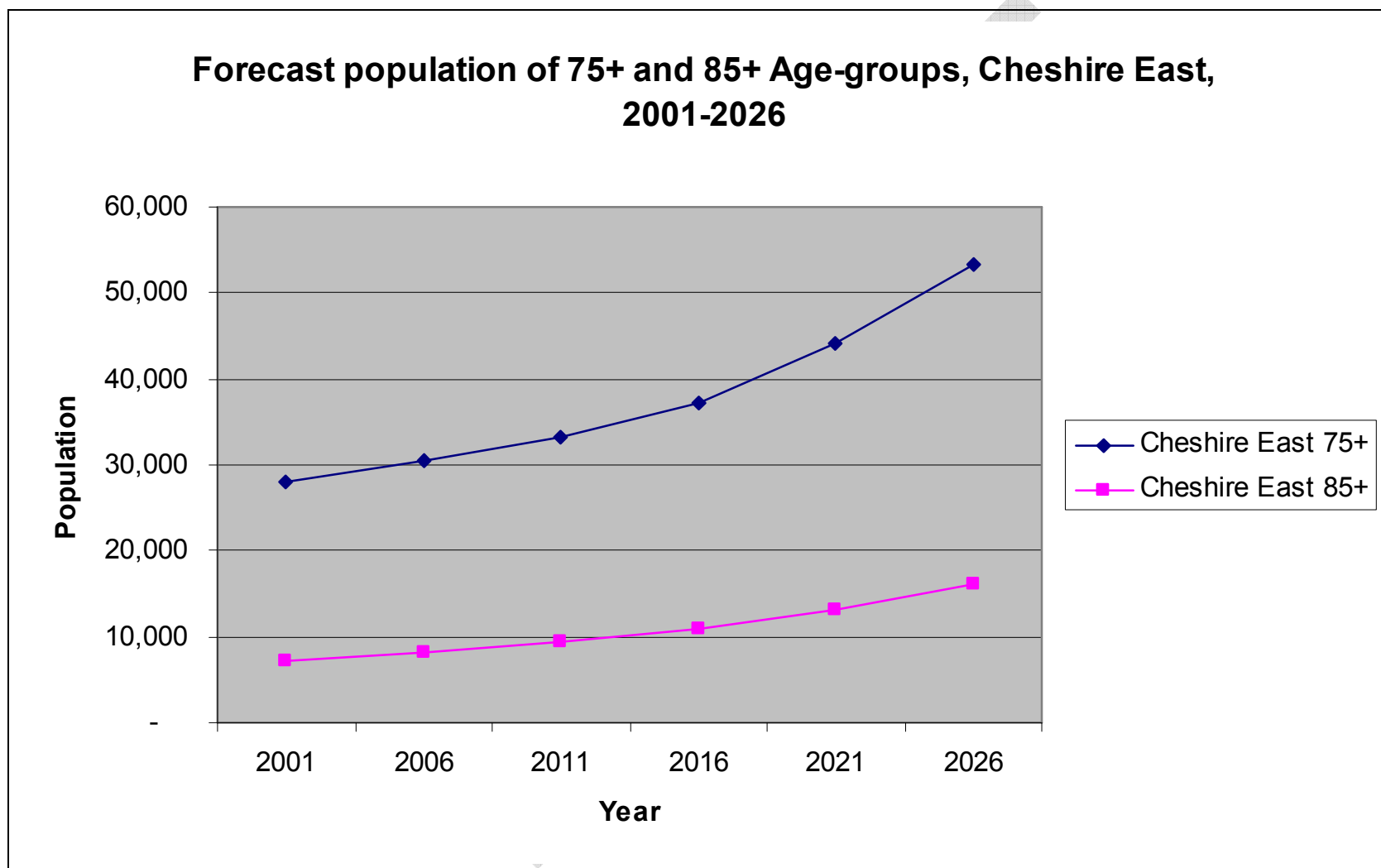


Figure A2 Importance for Providing a Good Quality of Life

Error! Not a valid link.

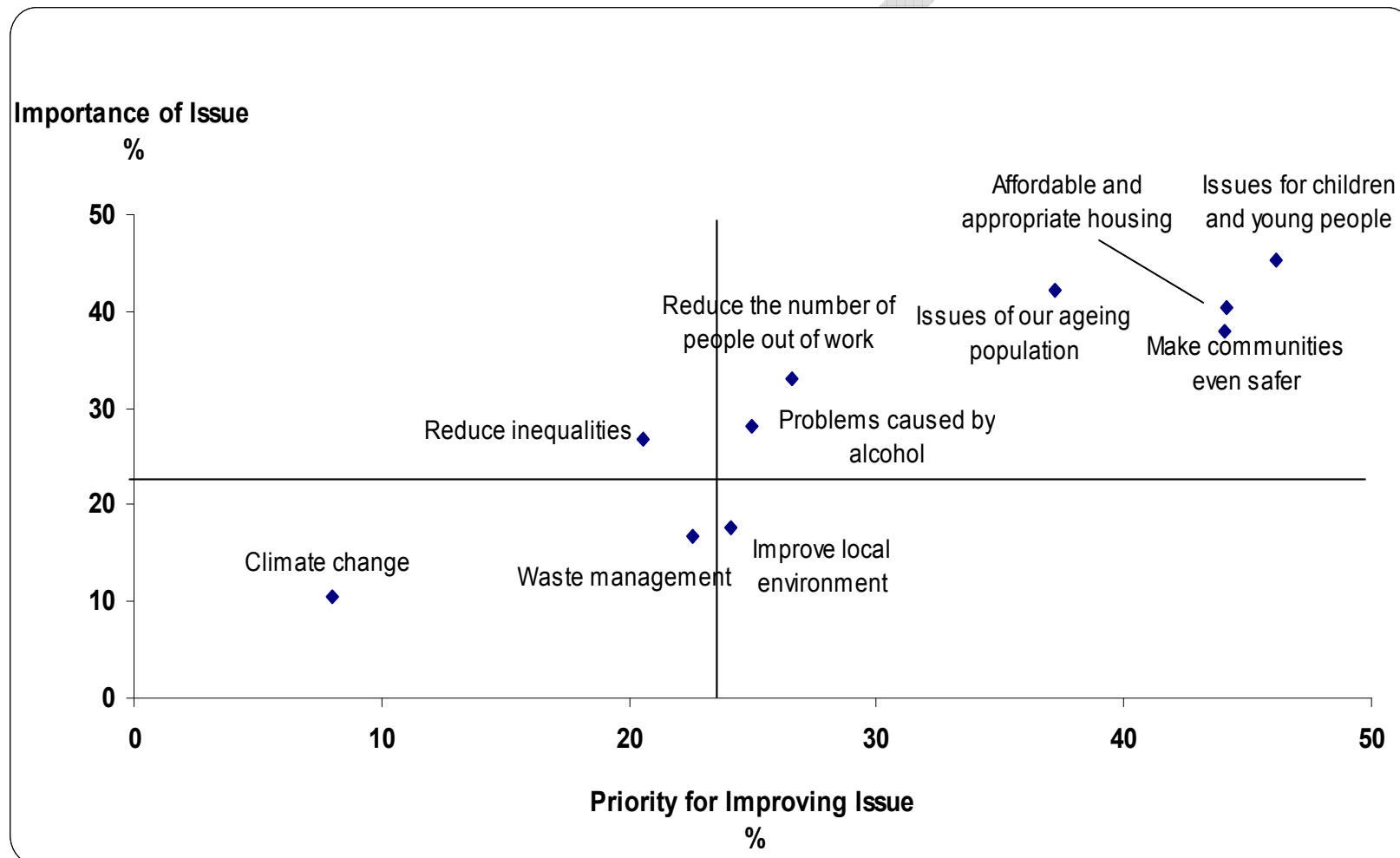
Figure A3 Issues to Improve Quality of Life

Error! Not a valid link.

Source: Cheshire Community Survey 2008, CCC Research and Intelligence Unit

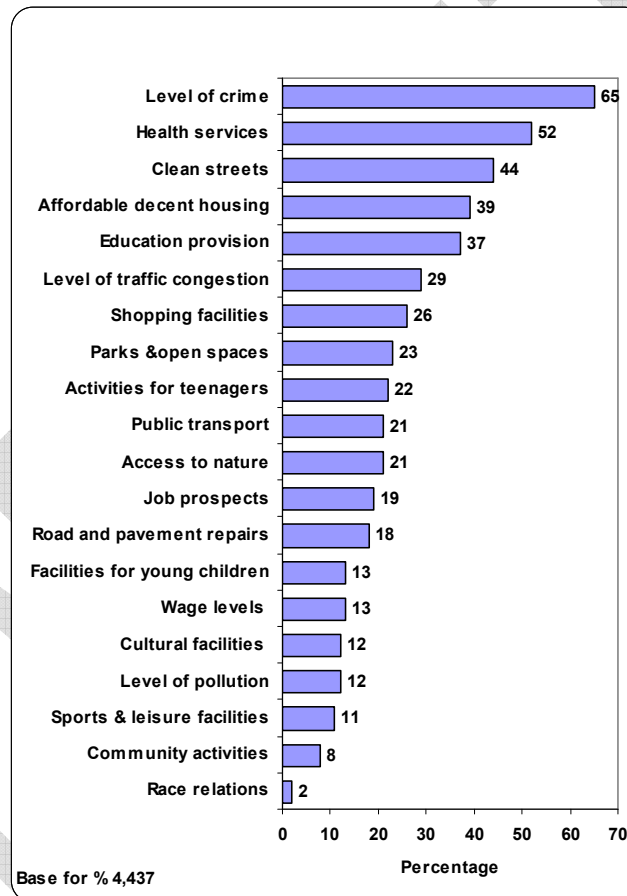
Source: Cheshire Community Survey 2008, CCC Research and Intelligence Unit

Figure A4 Quality of Life Issues – Importance and Priorities for Improving their Local Area East Cheshire



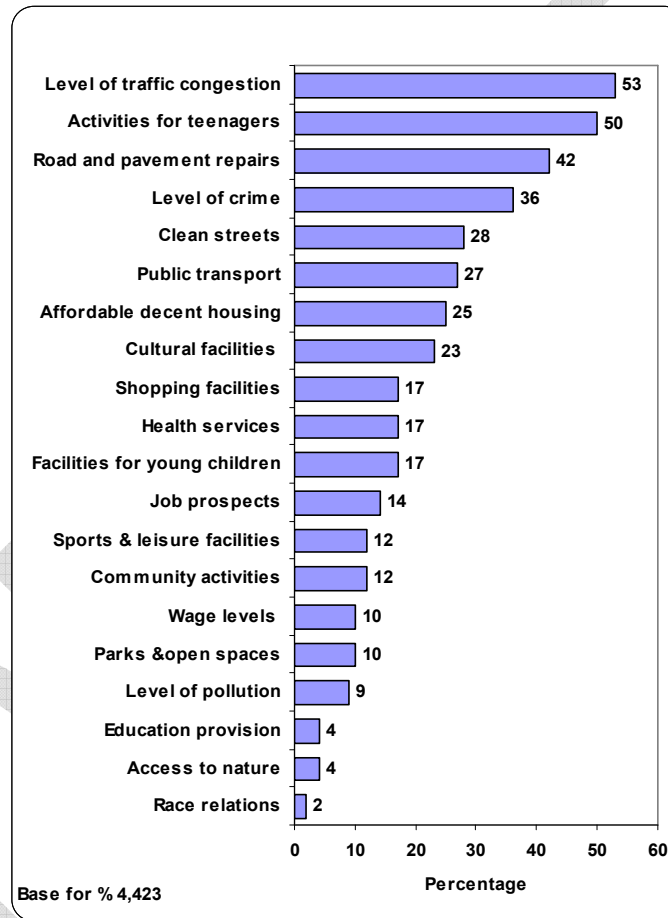
Source: Cheshire Community Survey 2008, CCC Research and Intelligence Unit

Figure A5: Overall Importance in making somewhere a good place to live (% in top 5 priorities)



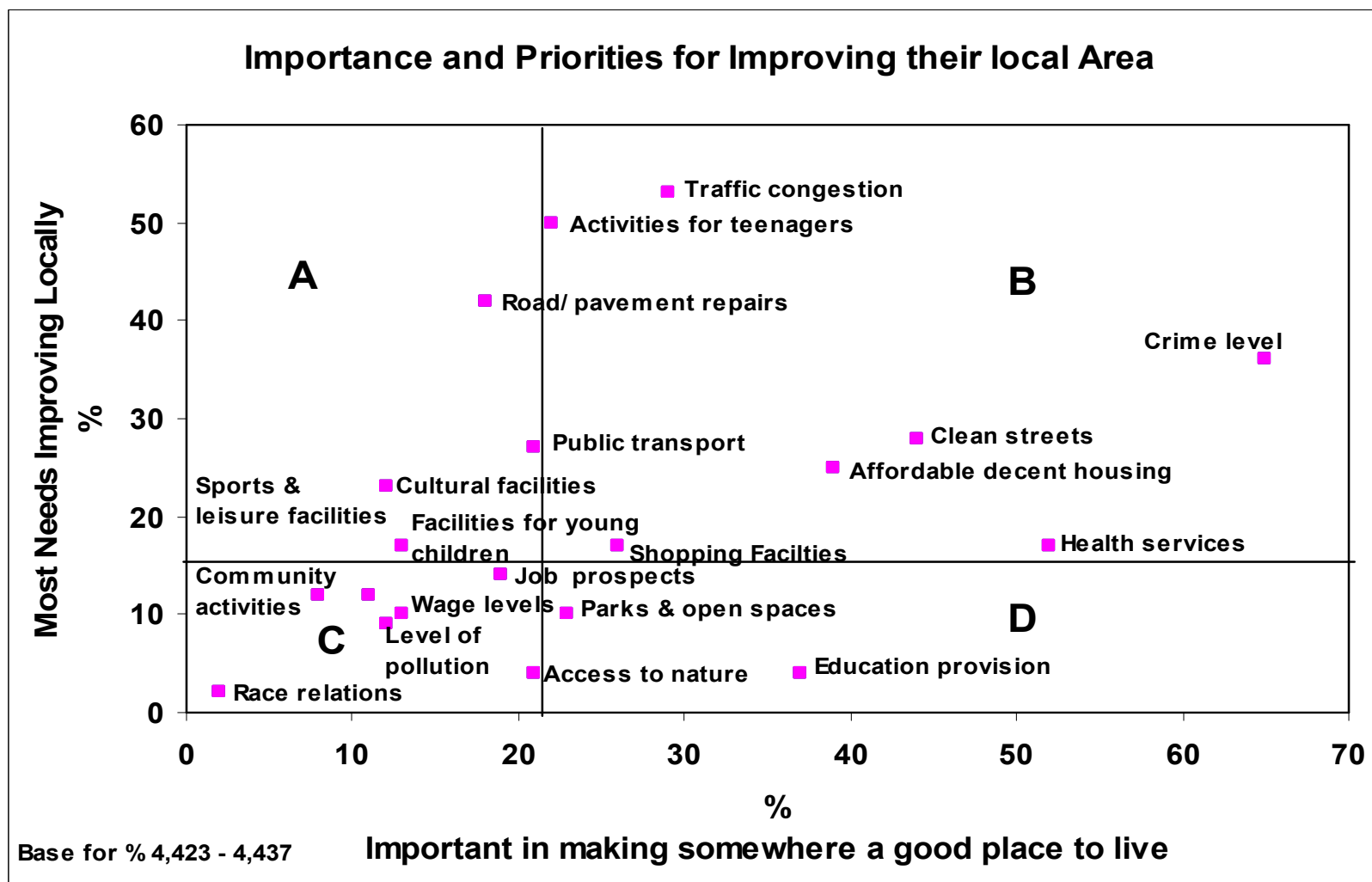
**Source: Best Value User Satisfaction 2006, CCC Research and Intelligence Unit
(data from CCC and 6 district surveys)**

Figure A6: Overall Priorities for Improving Quality of Life (% in top 5 priorities)



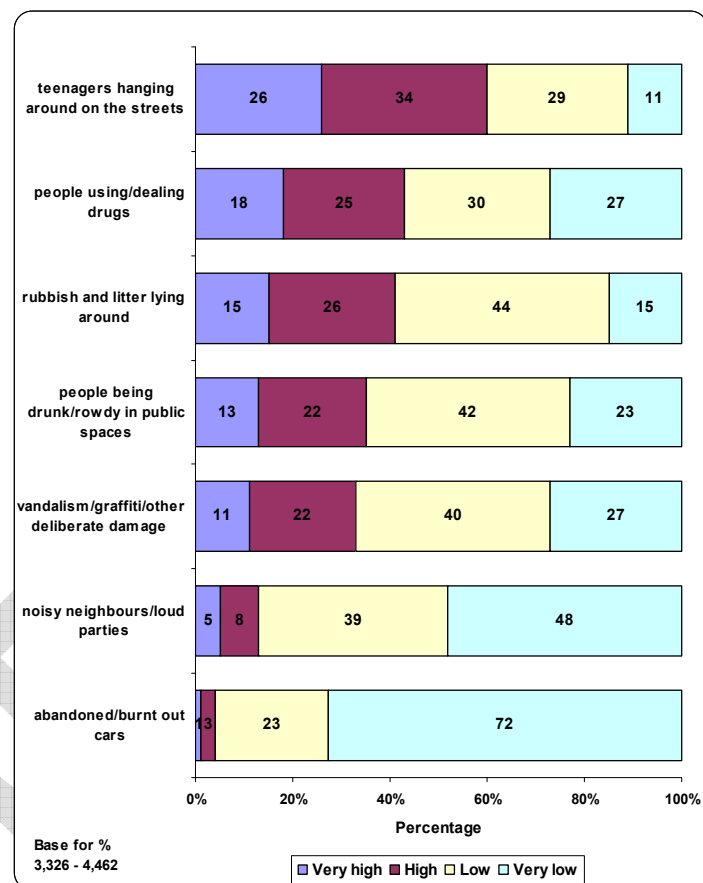
**Source: Best Value User Satisfaction 2006, CCC Research and Intelligence Unit
(data from CCC and 6 district surveys)**

Figure A7: Importance and Priorities for Improving their Local Area



Source: Best Value User Satisfaction 2006, CCC Research and Intelligence Unit
(data from CCC and 6 district surveys)

Figure A8 Perceived Level of Anti-Social Behaviour by behaviour problems



Source: Best Value User Satisfaction 2006, CCC Research and Intelligence Unit
(data from CCC and 6 district surveys)